

# Surveys on Phenology, High Altitude Vegetation Plots, Wild Bananas and Otters and Batwa Perspectives Studies



Fredrick Ssali, ITFC



# **What do Batwa feel they have lost or gained since Bwindi became NP?**

- Scoring exercises and interviews – methods used to gain a better understanding of Bwindi's importance to the Batwa NOW and just before it became a National Park
- Understanding local perceptions can facilitate dialogue with management for harmonious coexistence of the park and local people

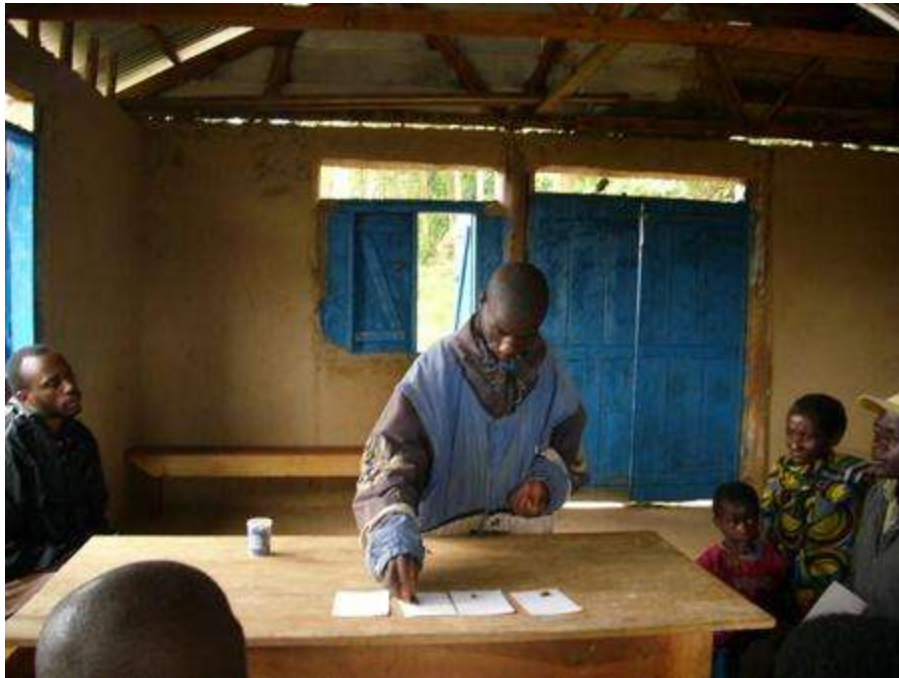
# Local perceptions on Bwindi's values

	2012		Before 1991	
	Female	Male	Female	Male
Wild plants from the forest	9	4	70	54
Wild plants not from the forest	9	5	0	6
Cultivated plants	51	6	0	0
Purchased plants	3	43	0	0
Wild animals from the forest	0	0	30	40
Wild animals not from the forest	6	6	0	0
Purchased animals	6	3	0	0
Domesticated animals	16	34	0	0

# Local perceptions on Bwindi's values

	Before 1991		2012	
	Female	Male	Female	Male
Hunting place	9	9	0	0
Food	18	12	27	13
Medicine	9	9	12	20
Construction materials	6	3	13	4
Tools	6	6	9	9
Fire wood	9	5	6	3
Basketry	9	6	18	8
Traditional/Ornamental	16	18	6	6
Marketable products	6	14	0	9
Recreation	9	12	9	28
Hunting function	3	6	0	0

# Scoring exercises





# 3D MAPPING BY BATWA



# PHENOLOGY

a) Gorilla fruit trees

Began: September, 2004

N species: 36

N stems: 312

DBH range: 9.0-133.2 cm

Mean stems per species: 8

Range stems/species: 1-17



Common species: *Podocarpus milanjanus* (N=17),  
*Myrianthus holstii* (N=15), *Prunus africana* (N=14)

Aspects involved: Total fruit, ripe fruit, fruit on ground, new leaves, flowers

# PHENOLOGY CONT'D



## b) Extended phenology monitoring

Began: April 2011

Sampling: based on stem size and slope positions

N species/stems/dbh range: 54/530/9.8-96.0 cm

Mean/range stems per species: 10/1-42

Common species: *Neoboutonia macrocalyx* (N=42)  
*Alangium chinense* (N=38),  
*Strombosia scheffleri* (N=27)

Aspects involved:

New leaves, old leaves, leaves on ground,  
damaged leaves, dead leaves on tree, flower buds,  
open flowers, flowers on ground, unripe fruit,  
ripe fruit, rotten/dry fruit, fruit on ground



# FAKE SEEDLINGS STUDY

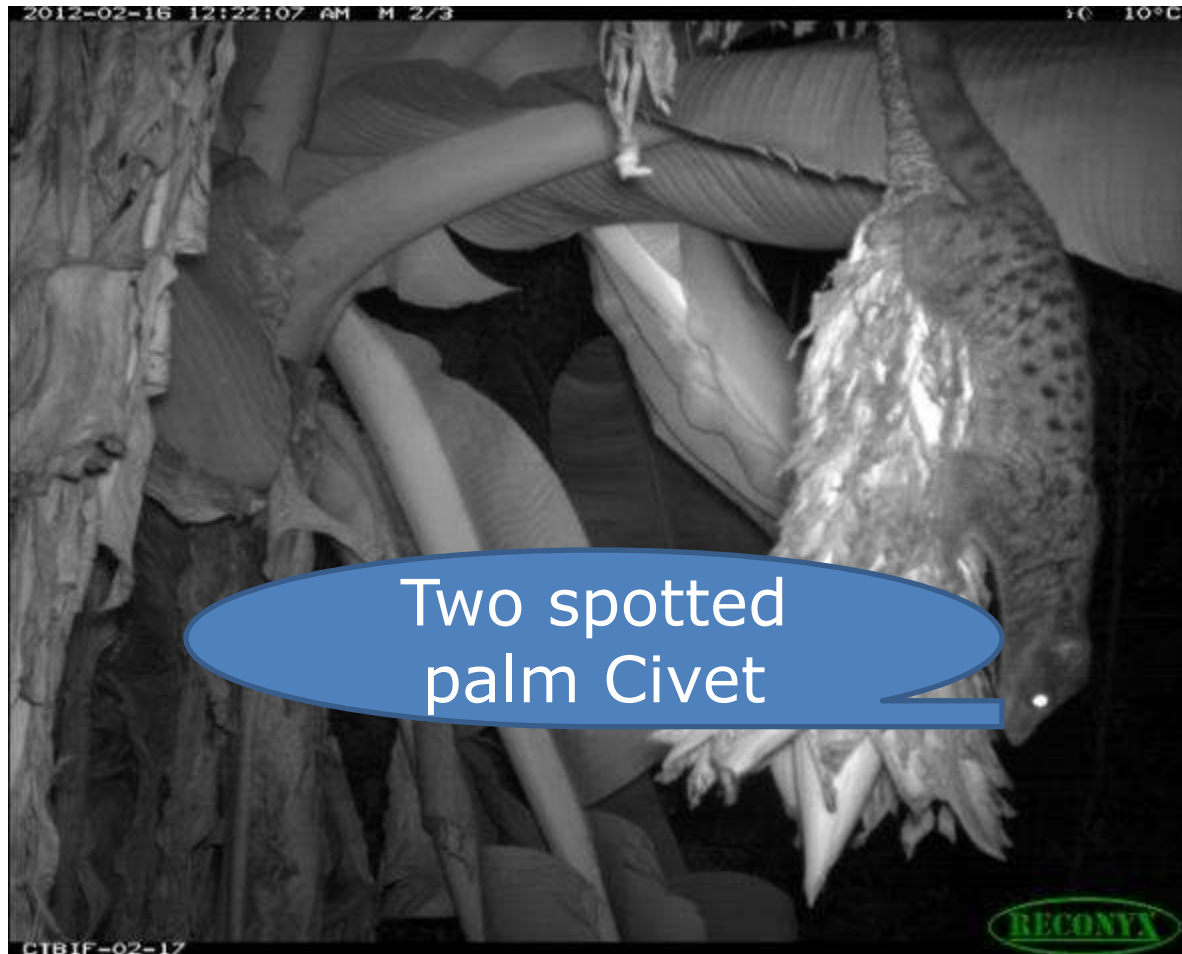
AIM: To examine causes of seedling death and damage

Making Fake Seedlings



Planting Fake Seedlings

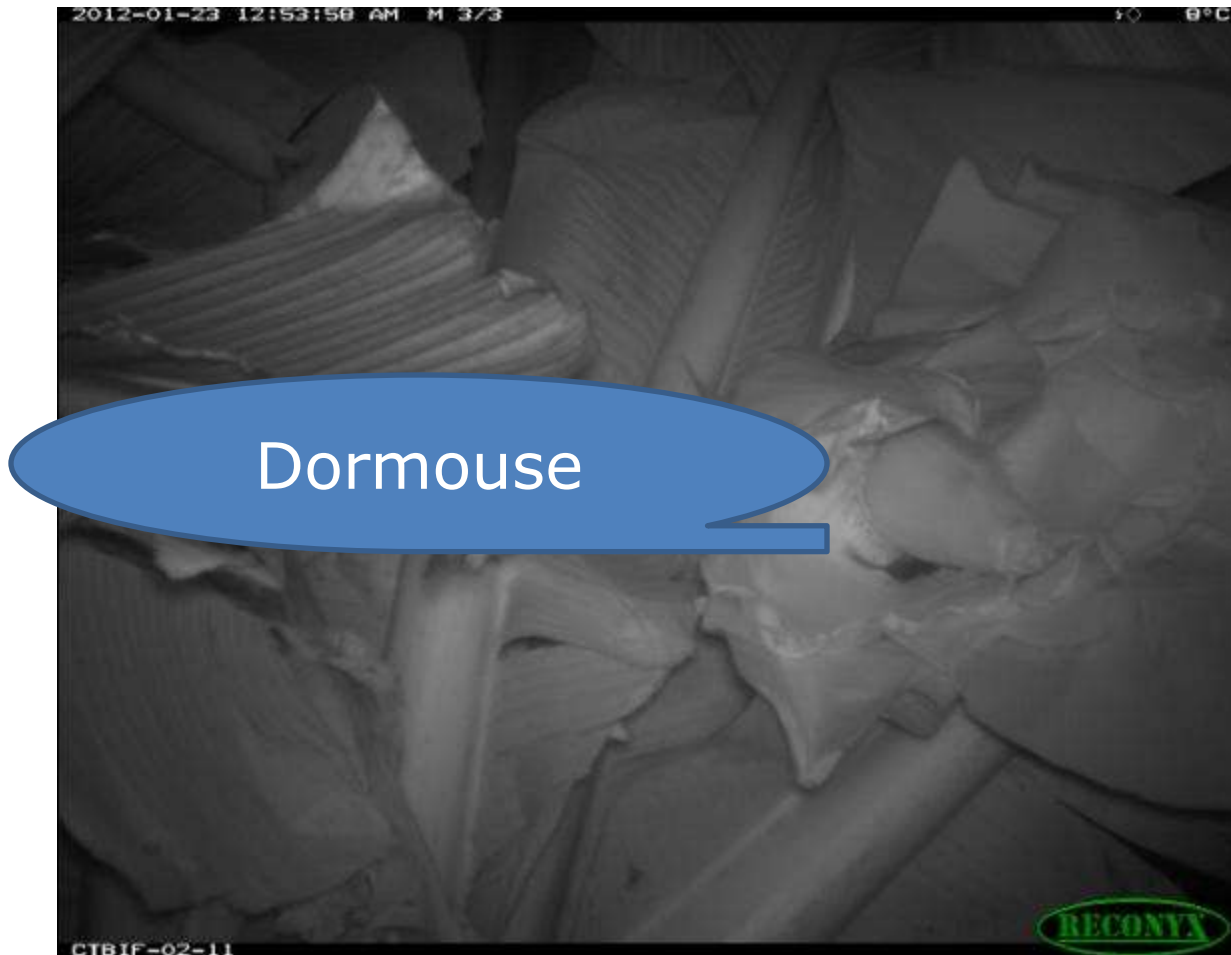
# Potential pollinators of wild bananas





Bat

# Potential pollinators of wild bananas





# Who eats wild banana fruit?





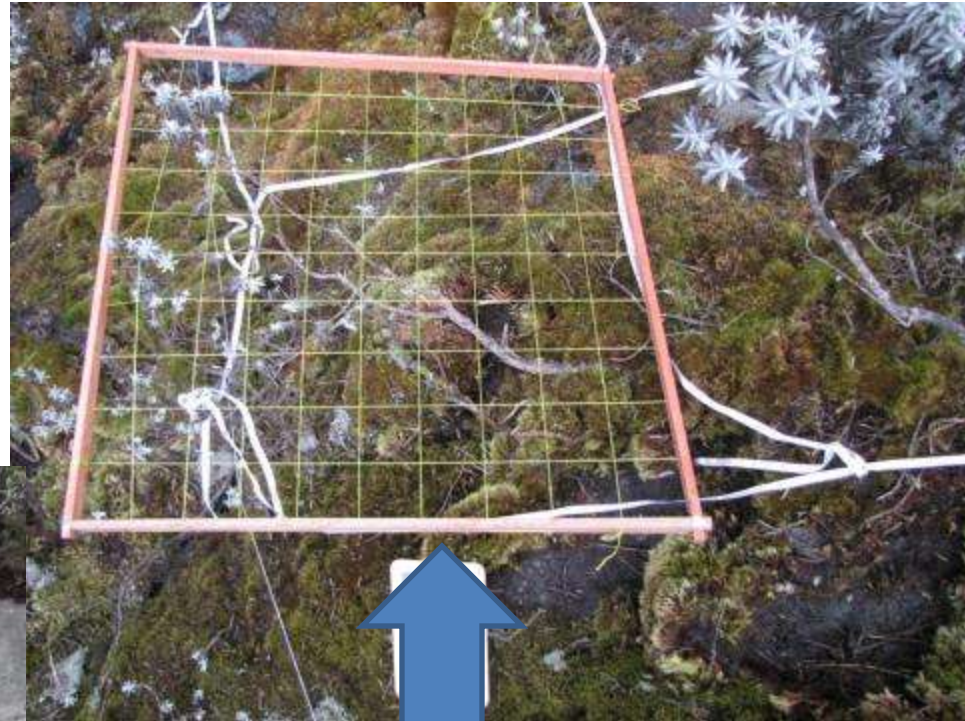
# Global Observation Research Initiative in Alpine Environments (GLORIA)

- Aim: To set up the first high altitude plots in Africa for monitoring impacts of climate change on mountain Biodiversity



# GLORIA METHODS

- 3X3m sampling grid with 1x1 m quadrat Overlaid



1X1 m quadrat in position



# GLORIA METHODS CONT'D

## TEMPERATURE DATA LOGGERS

- Logger with hole open



Logger with hole closed

# MELTING GLACIERS - RWENZORI





# ESTABLISHING A GLORIA SITE





# A WARM RWENZORI!!!



# MISTY ELGON





# THANK YOU

