

Tropical Ecology Assessment and Monitoring (TEAM) Network



Badru Mugerwa
2011

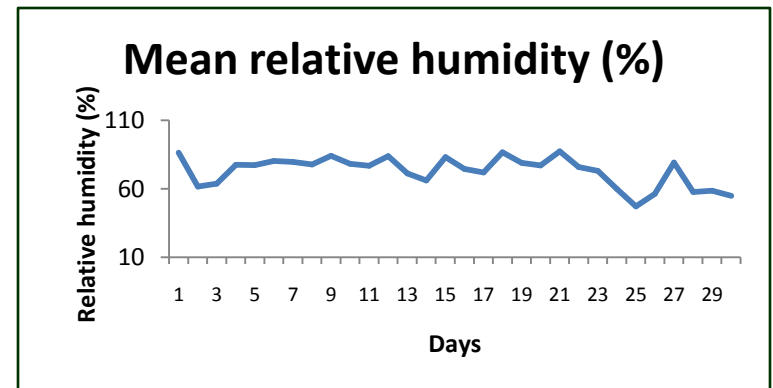
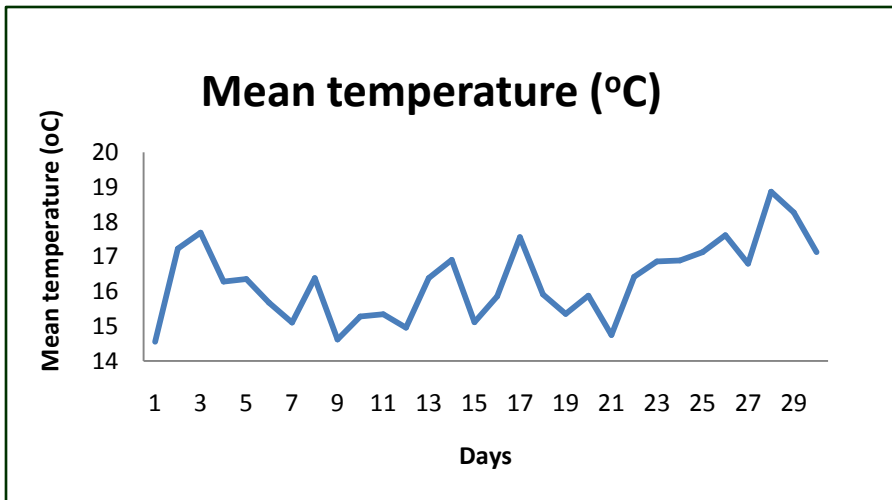
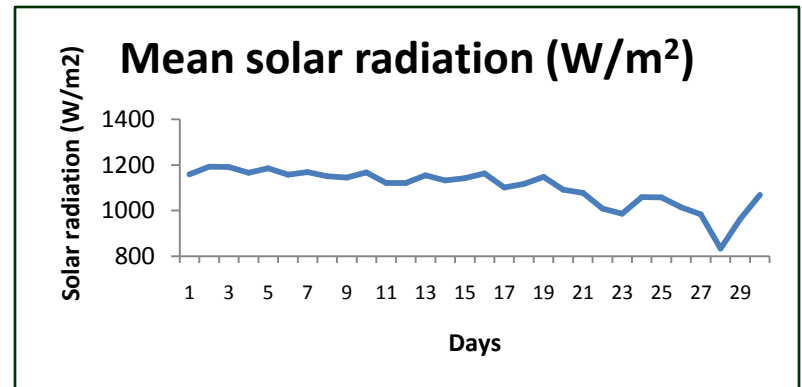
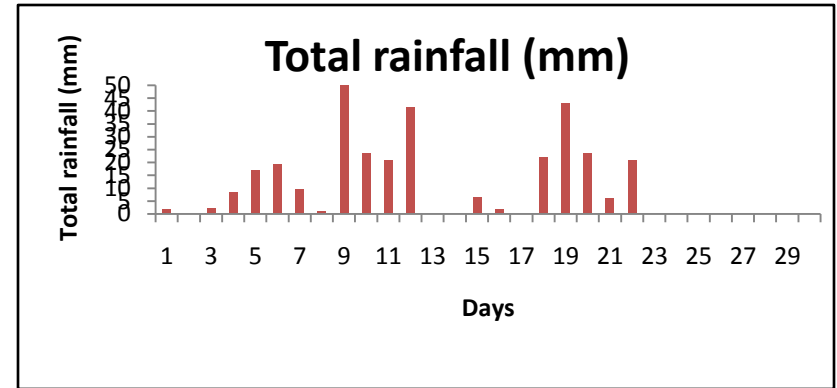
TEAM sites



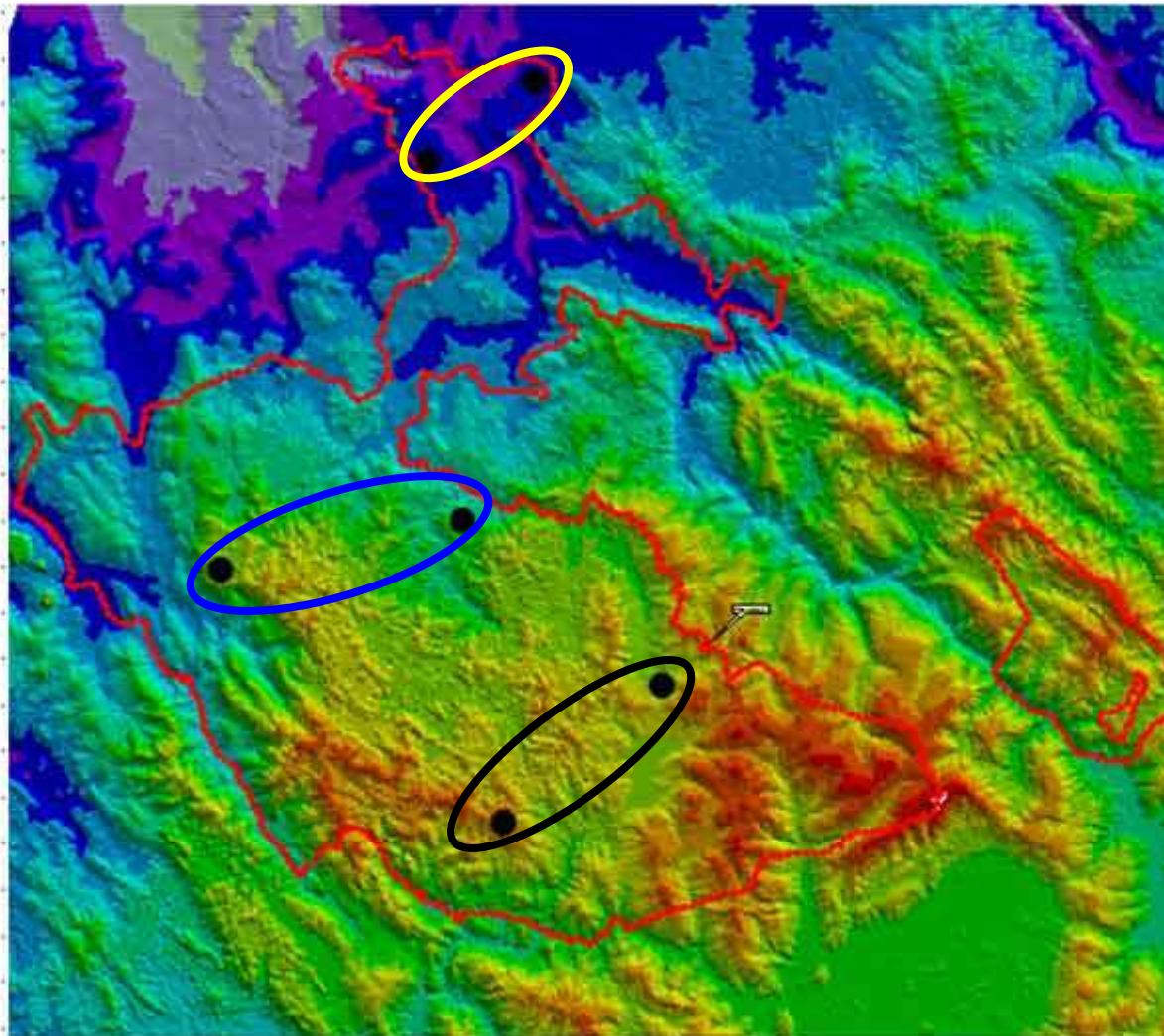
Benefits to Bwindi, UWA and ITFC

- Contribution to the global wealth of biodiversity and climate data
- Protocols provide baseline data vital for management and conservation.
- Exposed exposure to global community.
- Funding for long term biodiversity monitoring.
- Conservation for present and future generations.

Climate monitoring



Vegetation monitoring



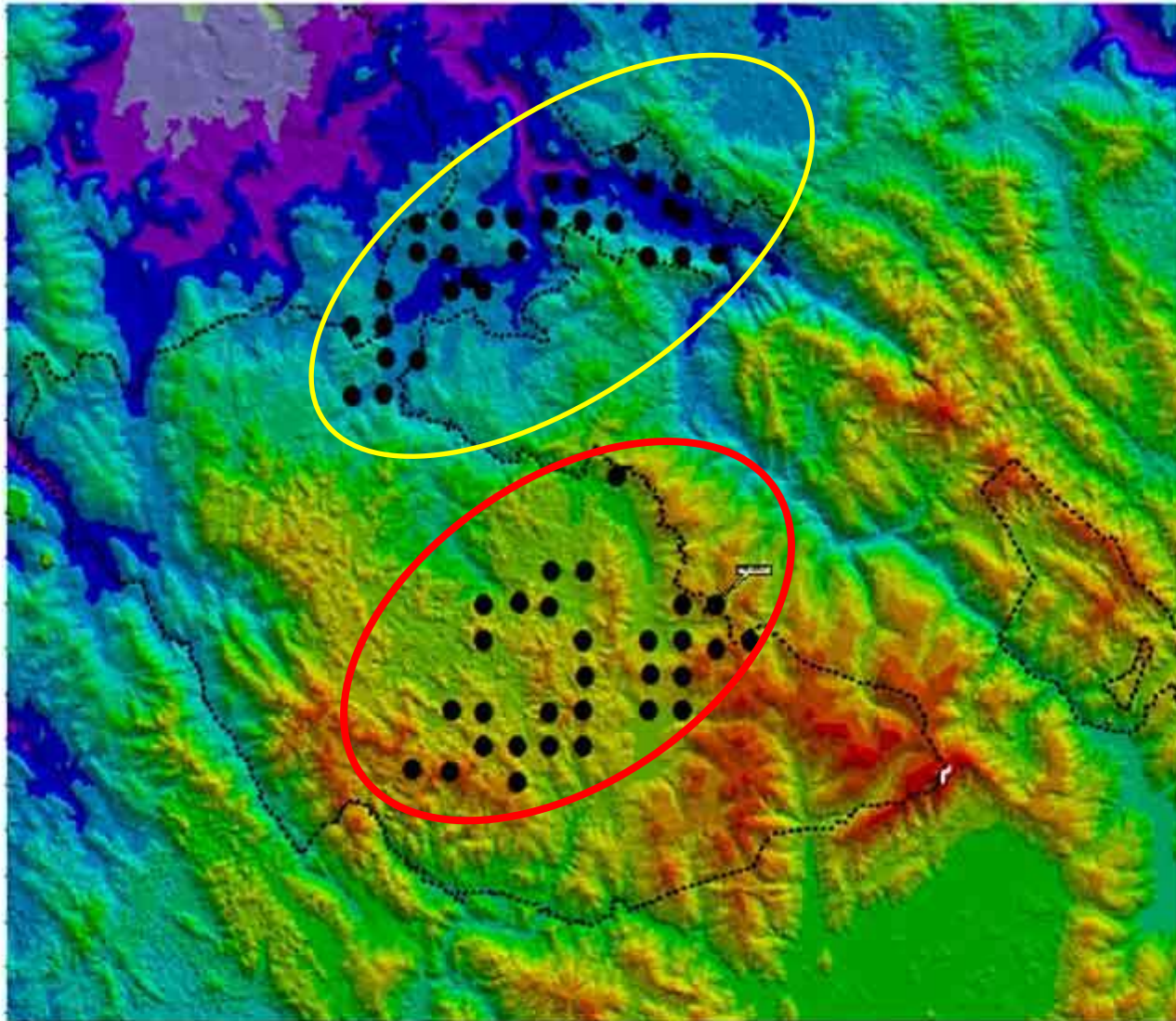
- 6 - 1ha PSPs
- 3 elevation zones
- 3068 stems
- Measured
- Tagged
- Identified
- Mapped

● Teamvegetationprotocol.dbf
Boundary Gazetted Areas



7 0 7 14 Miles

Terrestrial vertebrate monitoring



CT days: 1,800

Images: 10,029

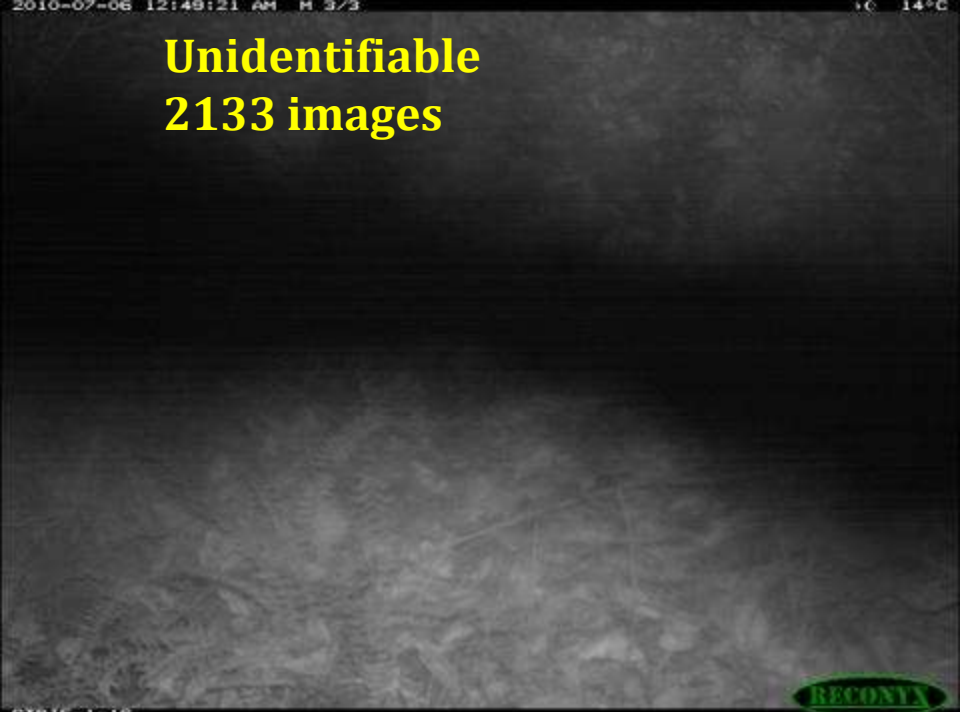
Families: 22

Species: 24





Blank
686 images



Unidentifiable
2133 images



African dormouse (*Graphiurus species*)
3 images, 1 CT



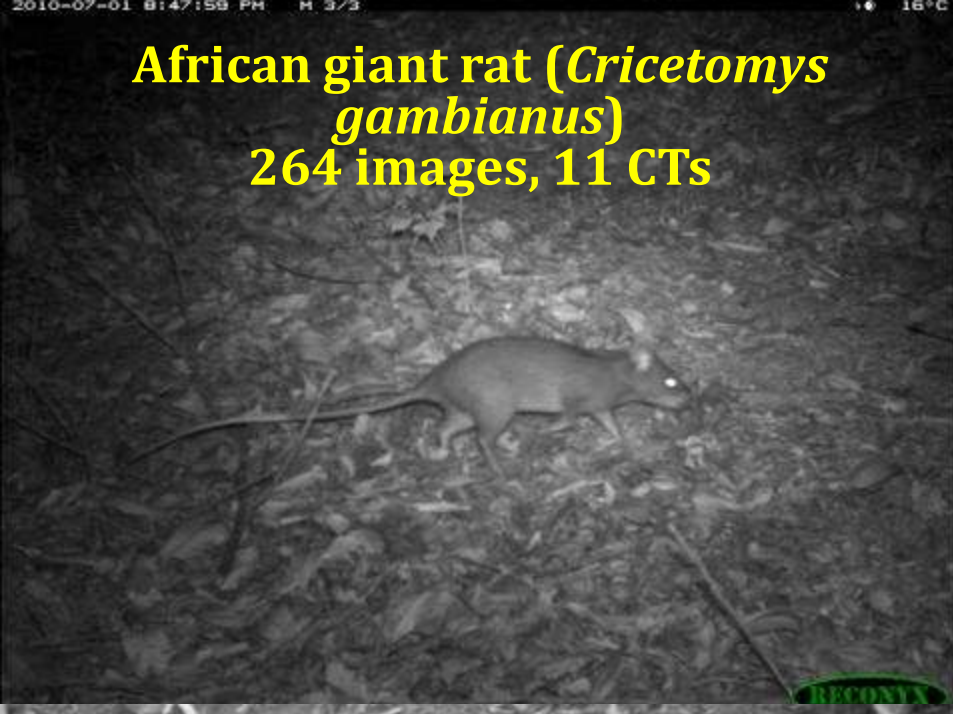
Soft-furred mouse (*Proamys jacksoni*)
880 images, 21 CTs

Shrew
9 images, 2 CTs



CTBIF-01-24

African giant rat (*Cricetomys gambianus*)
264 images, 11 CTs



Marsh cane rat (*Thryonomys swinderianus*)
9 images, 2 CTs



Boehm's Bush Squirrel (*Paraxerus boehmi*) 108 images, 9 CTs

Brush-tailed porcupine (*Atherurus africanus*)

108 images, 6 CTs



Dove (*Turtur species*)
42 images, 5 CTs



Raptor
6 images, 1 CT



Francolin (*Francolinus*)
78 images, 3 CTs



Crested Guineafowl (*Guttera pucherani*) 144 images, 3 CTs



Servaline genet (*Genetta servalina*)
54 images, 10 CTs



Marsh mongoose (*Atilax paludinosus*)
9 images, 2 CTs



African palm civet (*Nandinia binotata*)
12 images, 1 CT



African civet (*Civettictis civetta*)
6 images, 2 CT



2010-07-26 10:21:11 AM M 2/3 15°C
Honey badger (*Mellivora capensis*)
9 images, 1 CT



2010-06-19 6:04:56 AM M 2/3 13°C
Side-striped jackal (*Canis adustus*)
45 images, 4 CTs



Golden cat- Lighter Color morph
(*Profelis aurata*) 519 images, 15
CTs



Golden cat - Darker Color morph
(*Profelis aurata*) 177 images, 1 CT





Black fronted duiker (*Cephalophus nigrifrons*)

3332 images, 34 CTs



Sitatunga (*Tragelaphus spekii*)

21 images, 1 CT



Yellow backed duiker (*Cephalophus silvicultor*)

2808 images, 35 CTs



Common Bush pig (*Potamochoerus larvatus*) 195 images, 6 CTs



Olive Baboons (*Papio anubis*)
267 images, 11 CTs



Chimpanzee (*Pan troglodytes*)
279 images, 11 CTs



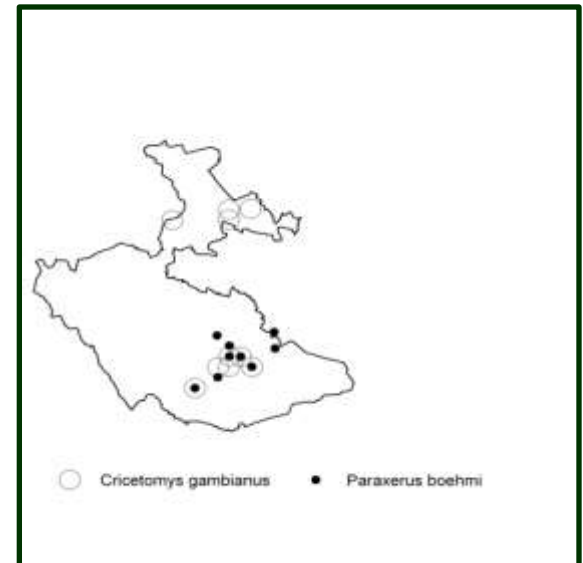
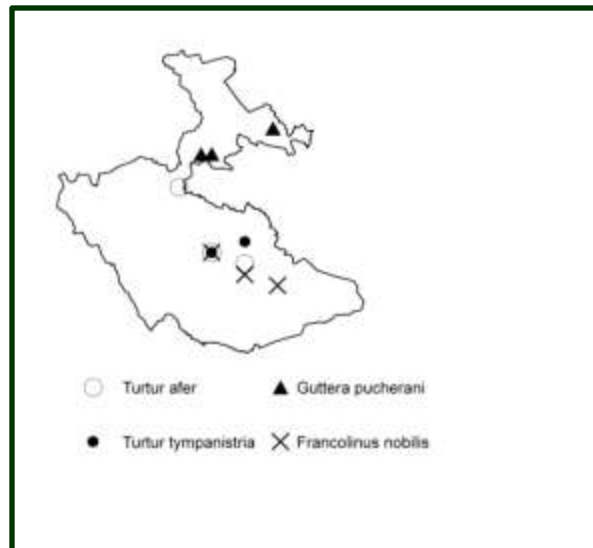
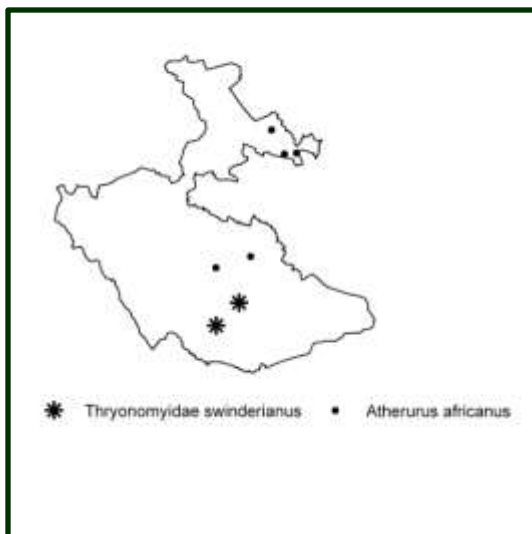
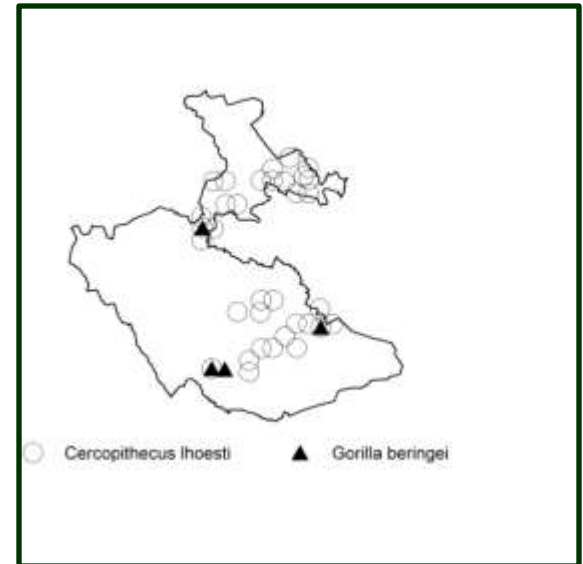
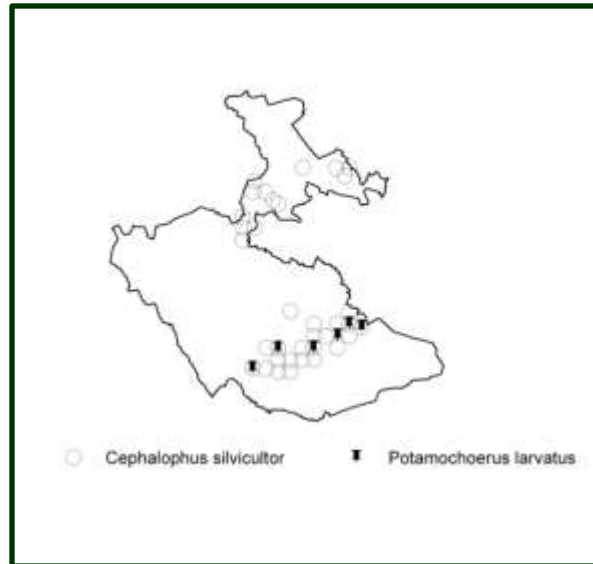
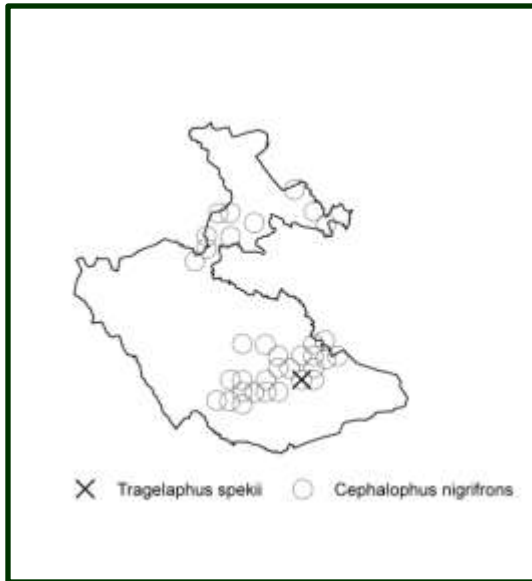
Mountain gorilla (*Gorilla beringei beringei*) 228 images, 4 CTs



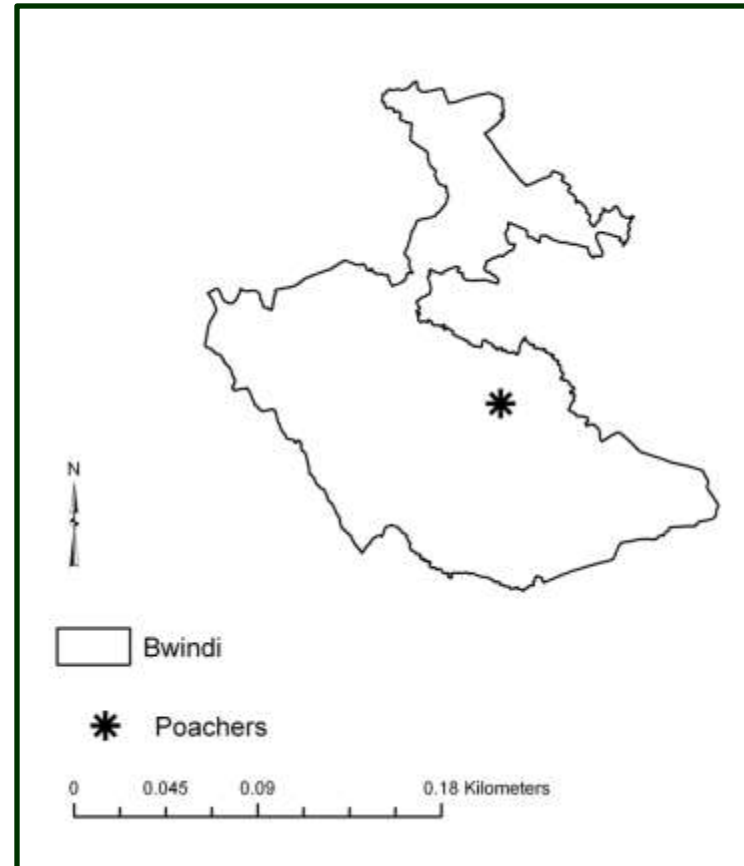
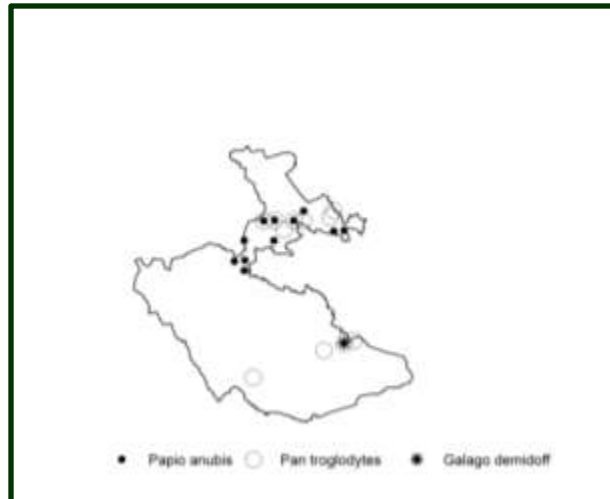
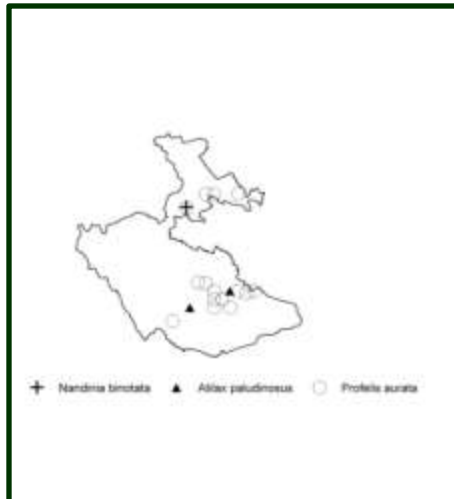
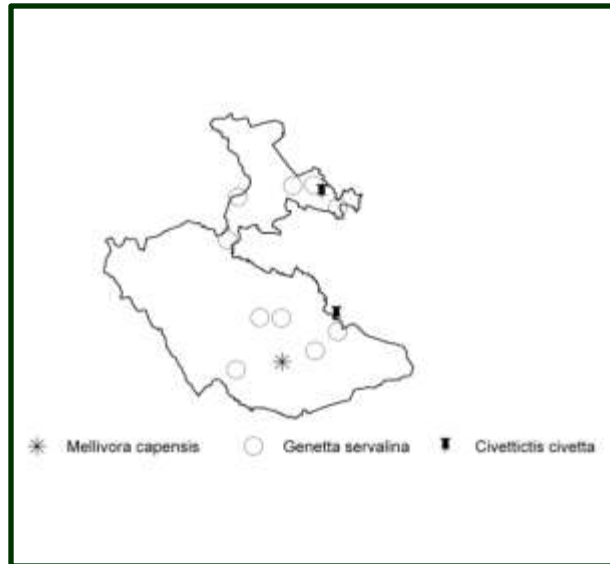
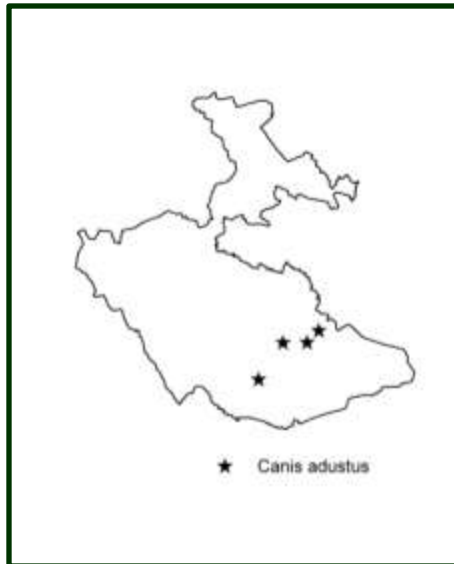
UWA staff

Tourists

Species distributions



Species distributions Contd





**TROPICAL ECOLOGY
ASSESSMENT AND MONITORING**



Thank you



Badru Mugerwa ITFC/WCS/UWA/TEAM Network
2011