

Introduction:

Ruhija Gorilla Friends Resort Campsite (RGFRC) is a locally initiated project started by community members of Kitojo parish, Kabale District. The project was started in July 2008 with the intention of developing local community incomes through sustainable gorilla tourism by providing affordable accommodation to tourists.



Mountain Gorilla feeding on Banana plantation (ITFC courtesy photo)

Mission:

- Provision of good accommodation to tourists
- Facilitation and development of local community projects around Bwindi Impenetrable National Park in Kitojo Parish through being campsite shareholders and provision of display places for selling their hand-crafts, and entertainment of tourists for income generations.
- Provision of sponsorship schemes for orphans in school.

Location:

The campsite (RGFRC) is located in Ruhija village, Kitojo parish adjacent Bwindi Impenetrable National Park less than 1km from the edge of the forest where gorilla tracking takes place.

It is an ideal place to stay when going to track the mountain gorillas of Bitukura group in Ruhija in Bwindi Impenetrable National Park.

Birders are offered an ideal accommodation in the campsite in Ruhija, the only place in Bwindi Park where all kinds of birds can be viewed.



RUHIJA GORILLA Friends Resort Campsite (RGFRC)



**Local Community Livelihood
Enhancement through a Sustainable
Tourism Project**



View of Bwindi forest from luxury tent

To reach the campsite

The campsite is located about 52 km from Kabale town off the Kabale Kisoro road to Ruhija village on a murrum road. During the rains you may need a four wheel drive vehicle to reach Ruhija. Public transport by pickups is available on certain days of the week (Tuesday, Wednesday and Thursday). You may also hire a vehicle (special hire) from Kabale or bodaboda (motor bike). Special hire prices range from \$35 to \$52 one way. Bodaboda motor bikes prices range from \$13 to \$17 one way. Some special hire phone numbers +256 782 966 885 and +256 772 557 479.



Sunset view from bar



Side view of luxury tent

Facilities available:

We offer the following facilities

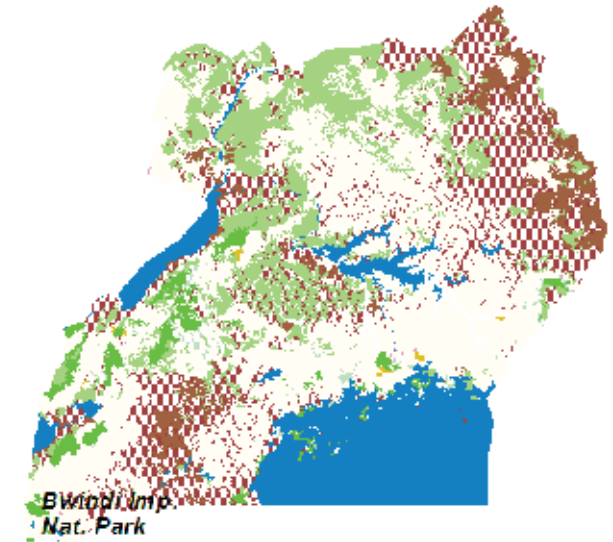
1. Four luxury canvass tents with twin beds. The tents are positioned in a beautiful view overlooking Bwindi Park
2. 3 twin bedrooms (budget travelers)
3. Well leveled camping ground
4. Tent hire for camping
5. Well space dining hall and bar
6. Well stocked bar with cold drinks (beers, wines, spirits sodas and water)
7. Shared flush toilet (for luxury tents) and pit latrine (for those camping)
8. We provide free breakfast when you stay with us
9. Meals are arranged on order

ACCOMMODATION

Facility	One pax	Two pax
Twin bed canvass tent	\$25	\$50
Single bed room	\$15	\$30
Camping tent hire	\$10	\$20
Camping (own tent)	\$7	\$14
Village walk	\$5	\$5

Lunch and dinner ranges from \$5 to \$10
Please ask for the Menu

Location of Bwindi Park and Campsite on Map of Uganda



PLEASE CONTACT US:

C/O P.O. Box 44, Kabale, Uganda
Tel: +256 772 480 885, +256 382 275 160
+256 772 874 803
Email: bitarihrobert@gmail.com
OR: mcleakankwasa@yahoo.com